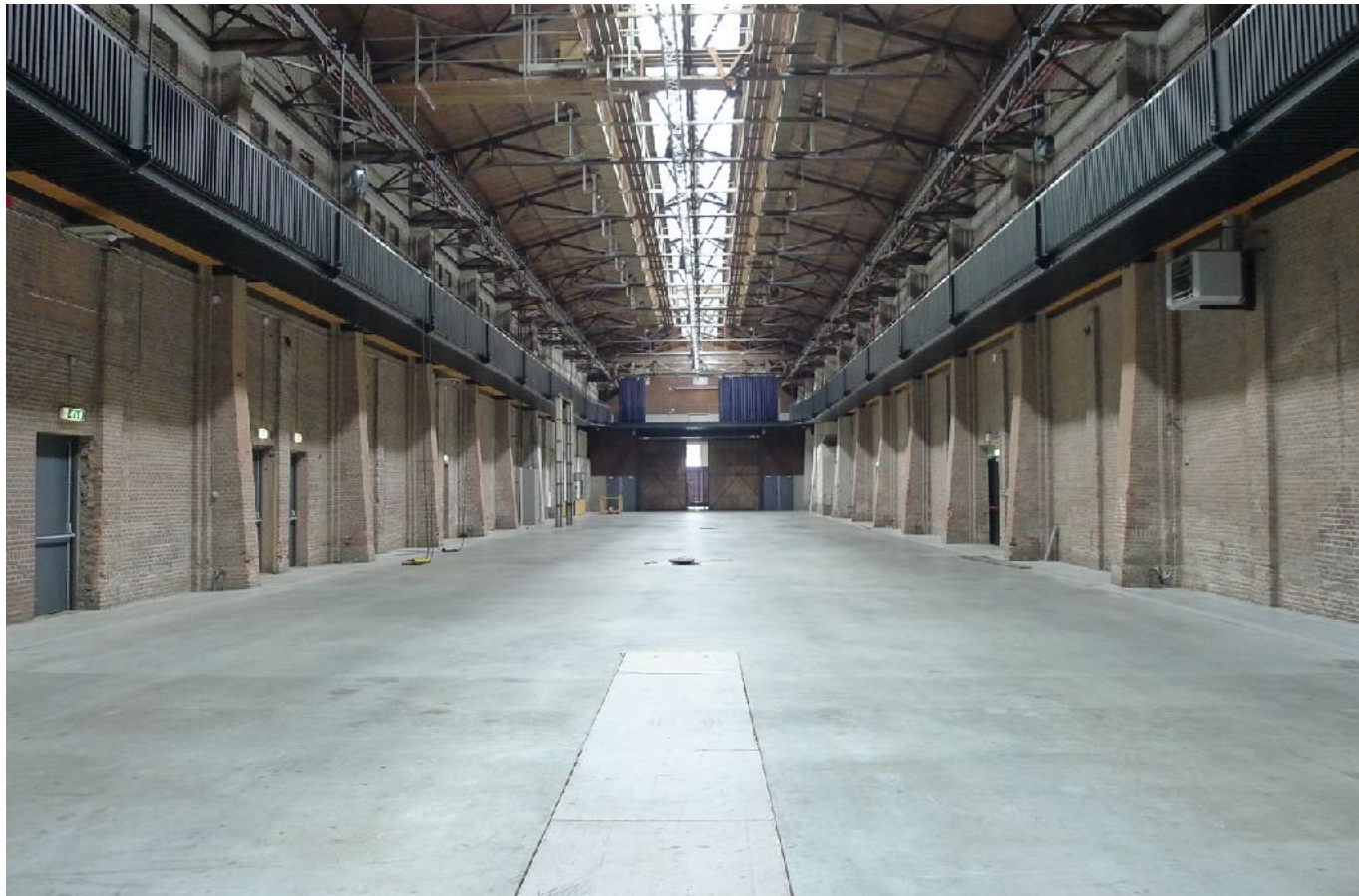




overview koek building / photography: jan doms | above: view towards the quay | bottom: channel viewing direction



‘STEPS TO HEAVEN’ - Jan Doms & Han Klinkhamer - July 2024 THE COMPAGNIE / NOORDKADE (NORTH-QUAD) - KOEKBOUW - Noordkade 10 - 12 Veghel (NL)

—————Concept 2nd phase—————05 09 2023

After the first exploration (Visual Art on the Noordkade dated 19/03/2023) of the possibilities for creating a duo exhibition in the Koek* building, the large monumental space ($\pm 70 \times 16 \times 12$ m) of the industrial building complex on the Noordkade in Veghel, Jan Doms and Han Klinkhamer started to further prepare the basis for this large-scale exhibition. This document CONCEPT 2nd PHASE 'STEPS TO HEAVEN' (dated 06 / 09 / 2023) explains this in more detail.

Steps to heaven

Following a recent visit by Jan Doms to the new 3D concrete printing factory of Saint-Gobain Weber Beamix in Eindhoven, he devised and launched the 'STEPS TO HEAVEN' project based on so-called 3D concrete printed slope stairs. He designed this concept for the upcoming large-scale exhibition in July 2024 in the Koek building of the Noordkade Veghel. Saint-Gobain Weber Beamix has indicated that it would like to be involved in the realization of this imaginative project.

At the suggestion of Han Klinkhamer, it was decided to also use this title 'Steps to Heaven' as the title for the exhibition. This title serves as a kind of metaphor for the endless road from matter to imagination, and vice versa. This endless search has characterized the spatial and 2-dimensional work of the respective artists for many years.

*) The Dutch word 'Koek' refers to the production of food cakes that in the past were served in summer as a food supplement to the grass and in winter as a supplement to the hay.

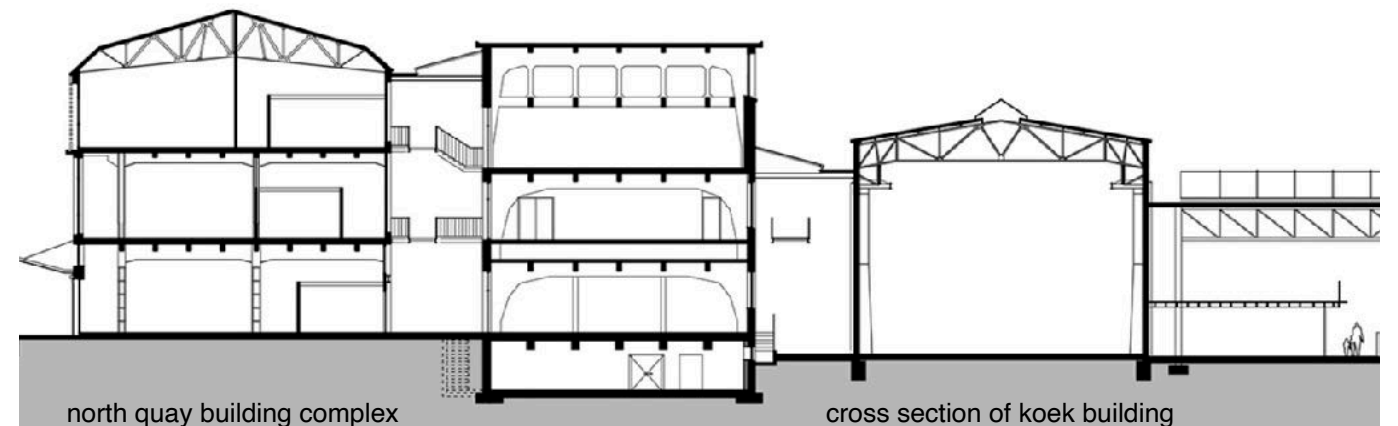




image 1st sketch 'steps to heaven' jan doms (dim.: 14 x 1.4 m x 0.4 m \angle 45 deg.) - (photo montage: jan doms)



image: large format work in production han klinkhamer (dim. 210 x 380 cm) - (studio photo: han klinkhamer)

The paths of Jan Doms and Han Klinkhamer cross regularly

In November 1979, Jan Doms and Han Klinkhamer met each other by chance for the first time in Han and Ilona's home in Ravenstein, located on the Maas River. They had settled there immediately after their return from Poland, where Han and Ilona had met during their stay in Warsaw, Poland. Ilona made spatial textile objects at the time and Jan had an appointment with her about this, because of the Tilburg Art Foundation in which he was involved at the time. After this introduction, Jan and Han regularly visited each other's exhibitions and projects to this day.

Tramp Shipping 1997

After an exhibition by Han Klinkhamer in Groningen, Jan and Han met Jari van Niejenhuis. He was a ship owner and had several ships in the tramp trade. Jari was asked if it would be possible to sail on such a ship for a while, drawing and painting the sea and coastlines along the way.

Early in the morning of early November at 8 am, they were able to embark on their newest ship, the 'Flinterhaven' in the old port of Hamburg, the Köning Wilhelm Schube (harbor basin). So Han and Jan took the night train there, with plenty of drawing and painting materials in their luggage. The adventure could begin.

From the port of Hamburg, the Flinterhaven sailed across the Elbe towards the North Sea. From there to the Baltic Sea and finally through the already frozen Gulf of Bothnia, to the port city of Kemi on the Finnish coast, just below the Arctic Circle. And then after a few days, from there back to the North Sea. Without calling at an intermediate port, they then sailed across the Atlantic Ocean, through the Strait of Gibraltar across the Mediterranean Sea to the port city of Gandia on the eastern coast of Spain. That was the end of the exciting adventure.

Sweden 2009

The stay in the Stockholm region, surrounded by the vast rugged landscape cut through by large lakes, offered Jan and Han the opportunity for utmost concentration during their daily drawing and painting work, each in their own studio.

Armenia 2019

Jan Doms had been commuting back and forth to Armenia for several years in connection with urban development research projects in the northern city of Gyumri, largely destroyed by a major earthquake in 1988. Traveling around, also in Nagorno Karabakh, offered beautiful views of the changing landscape. Reason for Han to travel to Armenia to take a closer look at that landscape.

Duo - exhibitions Jan Doms and Han Klinkhamer

The above-mentioned joint work periods have also led to their reflections, in the form of drawings, sculptures, paintings and special projects, of each individual being linked by a number of duo exhibitions, such as the exhibition 'Naturally imagined' in Galerie Bastiaans in Boxmeer (1998), 'Architecture and Landscape' in the pop-up HC Gallery, Maastricht (2013) and 'Forelands' in Luycks Gallery in Tilburg (2020).

The experience with duo exhibitions by Jan Doms and Han Klinkhamer shows that, although the work is very diverse, there is a visible and perhaps even more tangible relationship at an elementary level. This is evident from the many spontaneous reactions that have been received time and time again to these duo exhibitions.



image: scale model koek building Jan Doms (1: 50) in preparation for the design of the exhibition (photo: Jan Doms)

Scale model Koek building (scale 1:50)

To get a grip on the monumental industrial space of the Koek building, Jan Doms decided in consultation with Han Klinkhamer to build a scale model of the space (scale 1:50).

This is necessary to properly study the integration of the works - large-format paintings and drawings - by Han Klinkhamer and the large-scale three-dimensional works - sculptures and assemblages - by Jan Doms, each separately and in relation to each other.

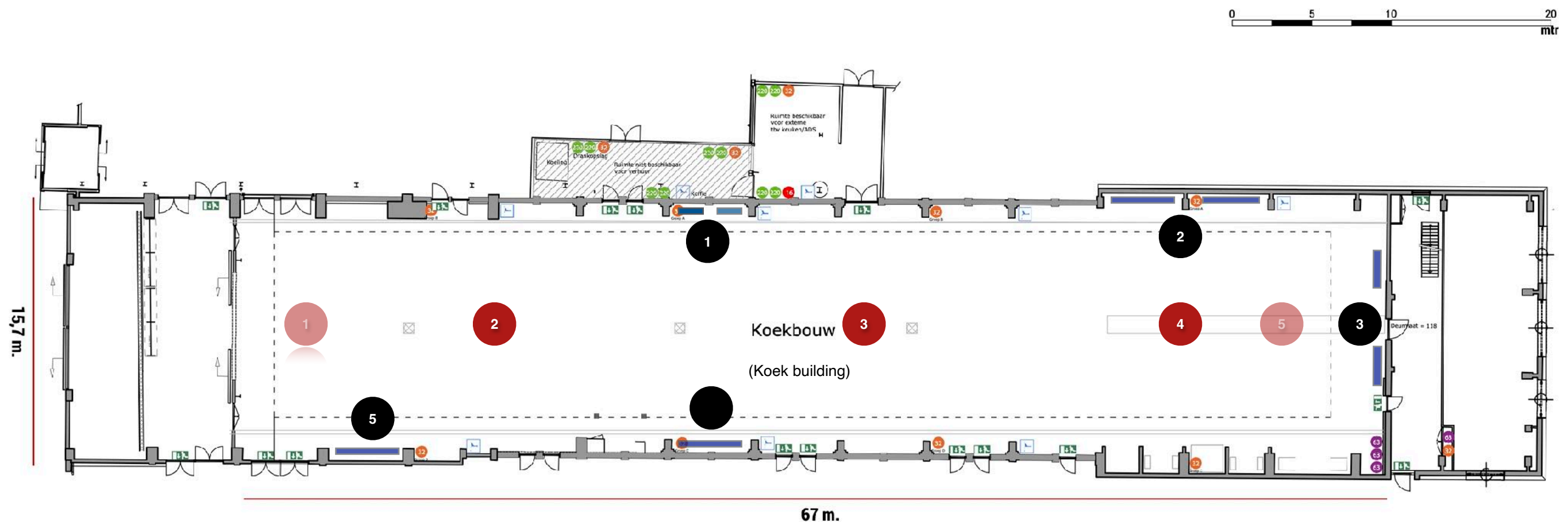
De Koek building as 'universe'

Jan Doms and Han Klinkhamer gradually came to regard Koek building as a kind of universe. One of the goals is that the building as such forms an essential part of the design of the duo exhibition. So not all walls are used to hang work. There is plenty of room to view the walls and construction in their untouched state. In this design, the Koek building becomes an essential part of the duo exhibition.

The duo exhibition designed as a 'planetarium'

On the map below, the positions of Han Klinkhamer's works are indicated with black numbers (supplemented by purple-blue narrow areas on the walls). The dimensions vary: portrait (300 x 210 cm) and landscape (210 x 380 cm) and otherwise.

The positions of Jan Doms' dynamic sculptures / objects are indicated with red and light red numbers. The dark red numbers represent the standing sculptures and the light red numbers refer to the hanging objects. Almost all sculptures are positioned on, or in relation to, the longitudinal axis of the Koek building.





scale model projects jan doms and paintings / works han klinkhamer (right wall) - photo: jan doms



scale model projects jan doms - photo: jan doms

Scale models of spatial works in combination with paintings / drawings

As previously indicated, Jan Doms' projects / sculptures are positioned on the longitudinal axis of the Koek building. The walls are kept free for placing the paintings and drawings by Han Klinkhamer - schematically indicated to scale on the right wall. It then also becomes clear how the interaction between the works of both artists will come into their own.

In the bottom photo (bottom left), the placement of the large-scale paintings / drawings by Han Klinkhamer has been omitted for the moment, because this would obstruct the view of the objects / sculptures by Jan Doms in relation to this model too much due to the position from which the photo was taken. Nevertheless, some large-scale works have also been placed on the left wall with a view to the desired interaction.

Balance

Also important, Han Klinkhamer and Jan Doms strive for a good balance between both works and the relationship between their works and the monumental industrial building.

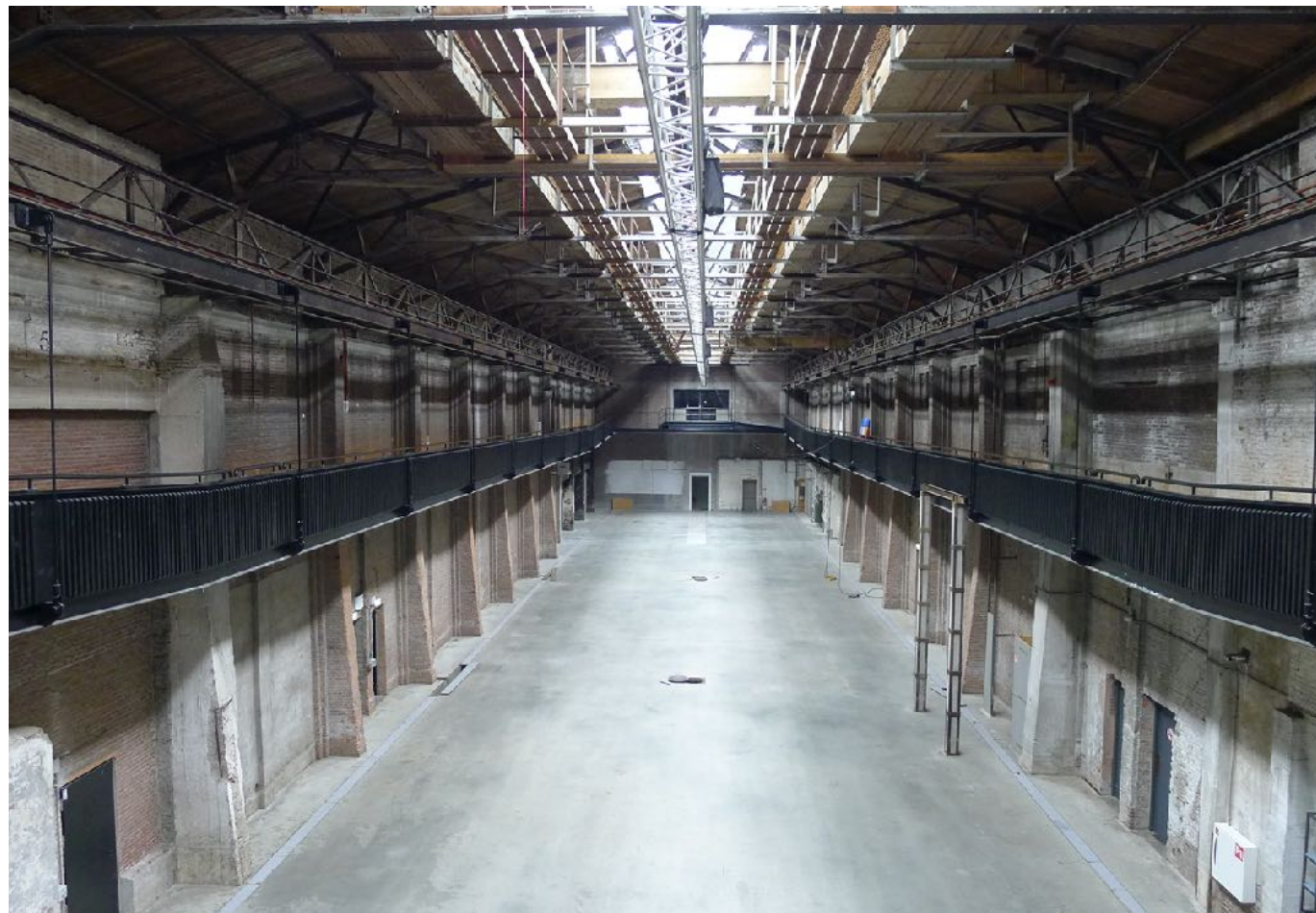
Certainly from the perspective of Jan Doms, whose works enter into an essential and inseparable relationship with the given architectural (and where applicable, landscape) space.

This spatial relationship also serves as a basic principle for the dynamic aspects of his works, which are often expressed in the performances in which the dynamic sculptures play a central role.

The relationship with the given space also plays an important role in the monumental character of Han Klinkhamer's large-scale paintings and drawings.



studio photos paintings (dimensions: 300 x 210 cm): han klinkhamer



overview from the platform over the walk around at floor level of the koek building - photo: jan doms

1st Floor Koek building

The first floor of the Koek building consists of a large platform and a walk around, which is accessible and passable to the public from several sides.

Platform 1st floor

In particular, the platform will also function as a reception area and as a kind of lookout post that offers a view over the monumental space of the Koek building.

On the large walls of the landing (and near the beginning of the walk around), there is space, similar to the ground floor, for several large paintings and/or drawings by Han Klinkhamer.

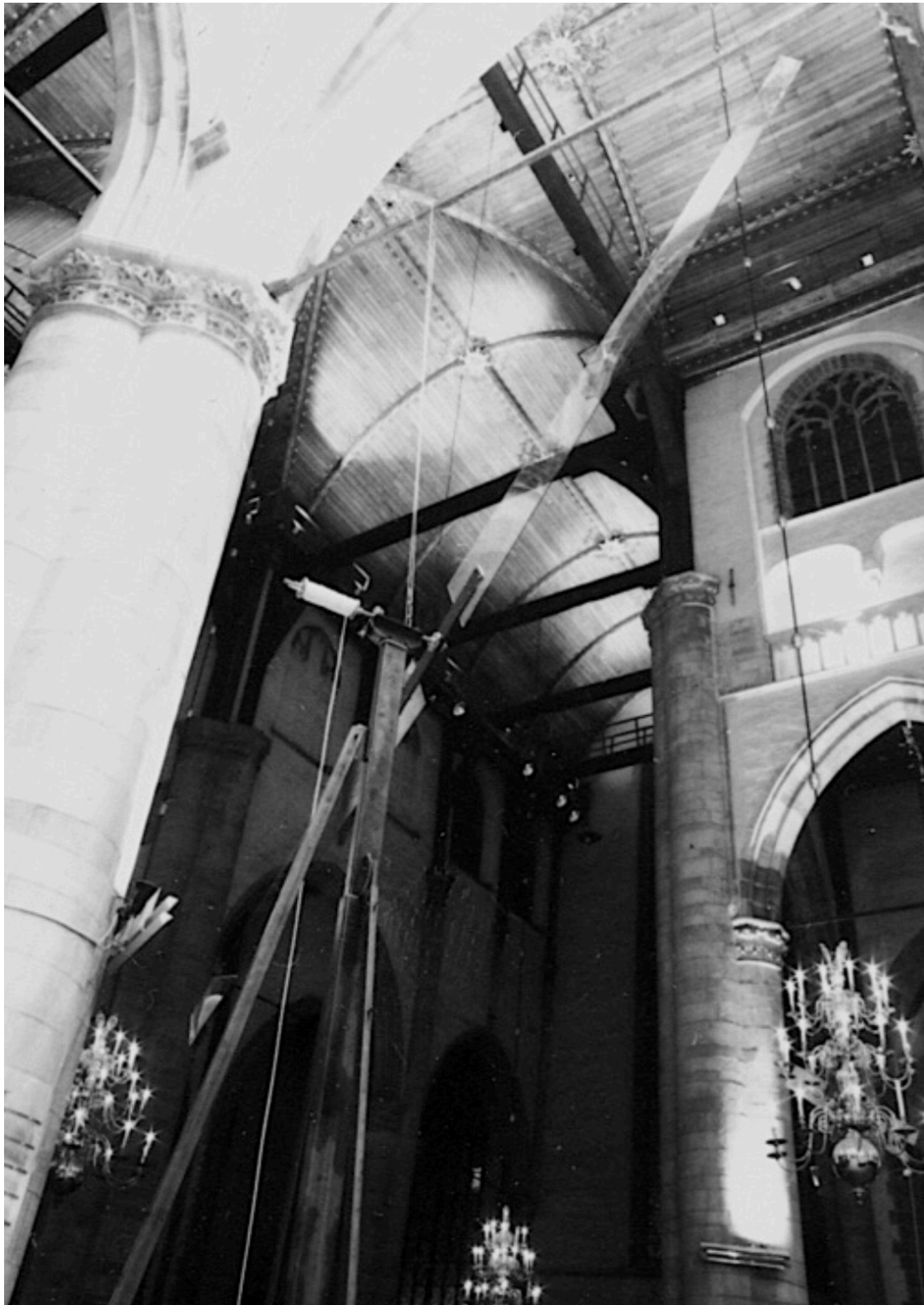
If possible, the furniture will consist of tables designed by Jan Doms and matching chairs from, for example, Gispen.

Monitor

Furthermore, a separate monitor will be placed for the many film material (recordings / documentaries) that provide background information about projects by Han Klinkhamer and Jan Doms.

Walk around 1st floor

Just as on the ground floor, the wall space at floor level will be used in a considered and measured manner to display special series in a modest format, in the form of travel drawings and/or reportage and/or assembled photos and small wall sculptures by Jan Doms.



location project in the laurens church 'wind' 2003 - biennial contemporary music rotterdam - gaudeamus foundation - performance: jan doms i.c.w. janhein van stiphout | organ and electronics / composition: willem tanke and vidna obmana

Performance programme 'Steps to Heaven'

Paintings / drawings as graphic scores

In 1981, Jan Doms and Ernst Bonis (e-musician - founder of music technology training in the Netherlands) and Paul van Kemenade (composer / saxophonist) experimented in the large space of the then active ENNU Foundation, located at the Wilhelmina Park of the famous landscape architect Leonard Springer. (1855 - 1940) in Tilburg - now known as PARK platform for visual arts - with works of art and the architectural space as a score.

De Koek building with dynamic sculptures and large format paintings / drawings as a score

On the occasion of the first major museum exhibition (1990) of the works of Jan Doms in the then Stedelijk Museum Roermond, former studios of the architect Pierre Cuypers (1827 - 1921), his sculptures were described in the review as: "his large-scale sculptures are just like actors, ready to take action."

Subsequently, the combination of showing large-scale sculptures and performing with dynamic sculptures as a basis has become a characteristic of his approach, often in collaboration with local artists from electronics, music, dance, acting, composing and related fields.

The Link

To involve musicians/composers in the performances, 'De Compagnie' contacted concert organization 'De Link' from Tilburg. 'De Link' is a concert organization for newly composed music in Tilburg, led by composers, musicians and enthusiasts.

Coincidentally, this concert organization started 30 years ago with the composer Jo Sporck and the pianist Paul Sprangers in Zouavenlaan 77, Center for Art and Design, at the time part of the Tilburg Art Foundation, which Jan Doms headed. The background to the name 'De Link' is to create more links between the music disciplines mutually and also to stimulate connections with other art disciplines.

Example: performance 'Wind'

In 2003, at the request and with the support of the Gaudeamus Foundation, the 'Wind' project was realized for the monumental Laurens church in Rotterdam, as part of the Biennale of Contemporary Music Rotterdam 2003. The Laurens church had two monumental organs and that was the starting point for Jan Doms (sculptor) and Willem Tanke (composer and organist) for the performance and the double sculpture 'Wind'. The performance involves JanHein van Stiphout (glazier) for the glass treatment and performance and the Flemish composer Vidna Obmana (Dirk Serries) for the electronic music. So two instant duos, one for the visual arts and one for the music. An exciting combination.

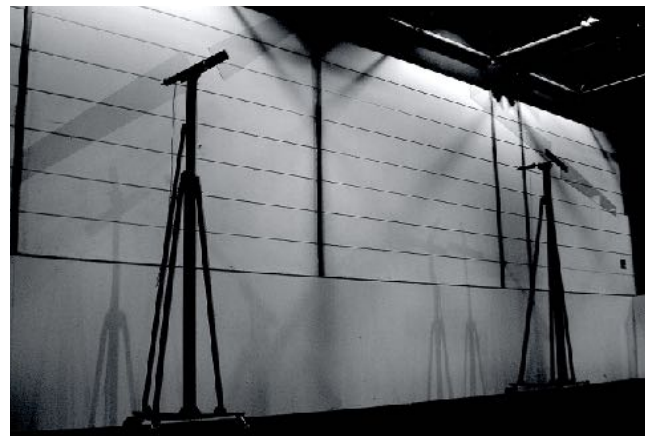
The two 8-meter-high windmills with glass blades rotated at up to 200 km per hour during the performance and the music based on it.

This project was subsequently carried out in an alternative setting in Düsseldorf, Germany, as a special project during Glasstec, the largest glass technology fair in the world.

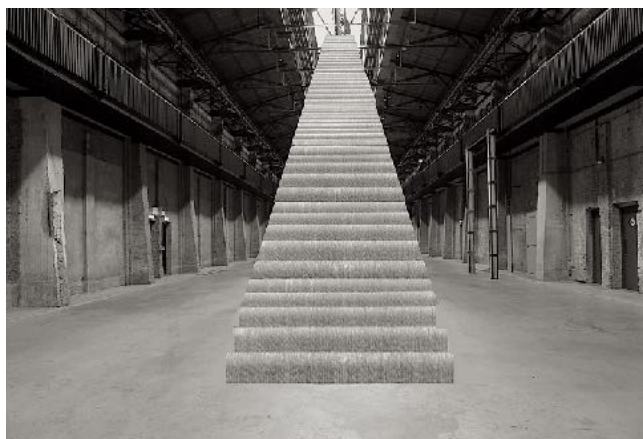
In this setting the project is located under number 1 on the map. The project has not yet been included in the model because it is still being worked on.



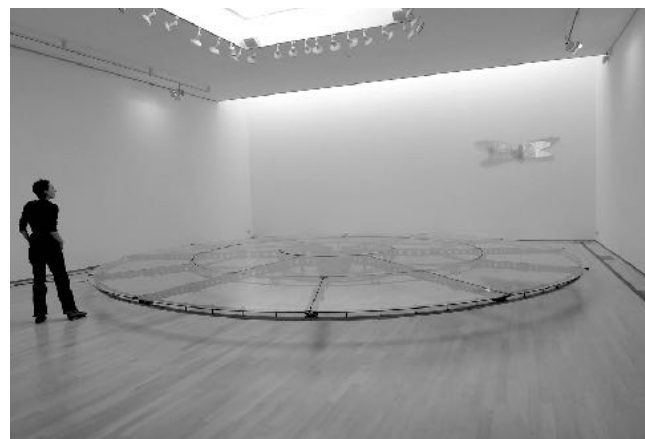
1 t / m 5 gr. floor + 3 platform (total 8) han klinkhamer



1. 'wind' - jan doms c.s. (glasstec dusseldorf)



2. sketch design 'steps to heaven' - jan doms



3. 'painters trail' (van der togt museum) - jan doms



4. model 'running circle' - jan doms



5. 'hovering glider' (polygonal hall) - jan doms



00 pop-up performance 'apache' - jan doms c.s. accea



00 pop-up 'in contro di boxe' - jan doms c.s. park

Performances

1 - 5 + 3 (total 8) Han Klinkhamer

Musical walk along the 'landscapes' of Han Klinkhamer. The basic idea is to have one or more musicians visit the works with a mobile instrument or otherwise respond musically from a fixed position. This performance can be performed several times with varying musicians. This way you can experiment with this fact several times - the paintings / drawings as scores. But the building itself can also be regarded as a score.

1 - 5 Jan Doms

Each performance can only be further developed if the collaborating artist (or artists) - musician / dancer / performer / actor or anyone else - are known. In addition, the special relationship of the sculpture/sculptures with the architectural space especially for the Koek building must also be further elaborated.

1. Wind

This performance as achieved is further explained on the previous page.

2. Steps to Heaven

The intended setup already contains a daily performance. Because it happens that every day when the sun shines, around noon the radiant incoming daylight coincides exactly with the central axis of the Koekbouw where the stairs are positioned. In fact, the stairs function as a kind of sundial that would not be out of place in the Indiana Jones adventure films, so to speak.

3. Tanzen auf dem Malerwanderweg / Dancing on the Painters Trail

Dancing on the Painters Trail consists of a moving glass dance floor with a diameter of 8 meters. This multidisciplinary performance was created by Jan Doms (libretto / stage design) for major theaters and special locations. We worked with a large cast consisting of a dancer, various musicians, animators. The temporary company also included a costume designer.

dancer: Ulrike Doszmann

composers / musicians: Evelien van den Broek (composition / electronics / voice) Ries Doms (drums), Wout Kemkens (composition / guitar / voice), Jarno van Es (piano), Ernst Bonis & Joris Bonis (composition / electronics)

light - animation: Wiersma & Smeets / Blanca Alonso

costumes: Juliane Schreiber

4. Running Circle

This elongated element of spring band steel can be set in motion and move back and forth like a more or less floating circle, until the object slowly comes to a stop again. It is made for one or more dancers to set it in motion. With the help of electronics, the signals released by the movement of the spring steel are converted into sound and music. During the exhibition, the public can also experiment with this moving object.

5. Talking Gliders

The large size gliders (length 10 m / wingspan 9.5 m) are made of lightweight wood based on model construction and they work as a sound box. American poet Alex Vartan Gubbins wrote the dialogue, performed by Lilit Petrosian (poetry out loud) and Hasmik Tangyan (dance and movement), in connection with 'Apache' in the Armenian Center for Contemporary Experimental Art (ACCEA 2019).

00 pop-up performances Apache / In control di Boxe

'Apache' and 'In contro di Boxe' are two recent examples of pop-up performances to be added.